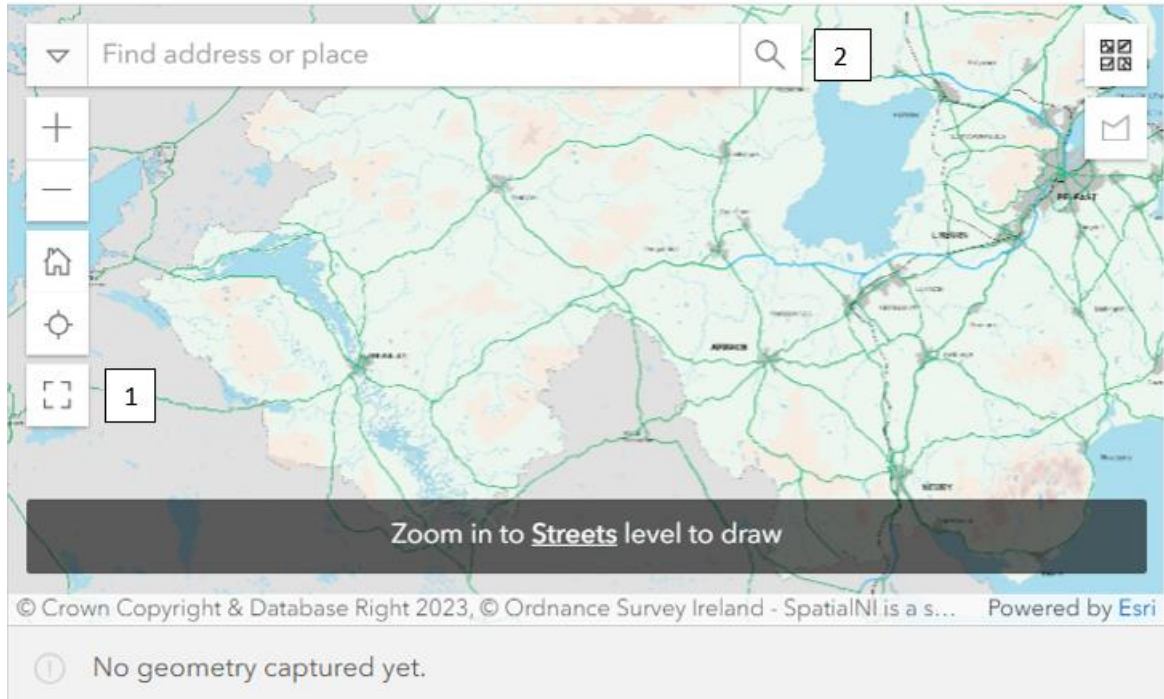


## How to sketch the boundary of the site

Under Section 2 of the survey the first option is to draw the site boundary directly onto a map. If there is no map showing please enter the nearest settlement name or address to your site in the 'Find address or place' and click on the search button (both a labelled 2 on Map 1 below) A similar map to Map 1 below will appear.



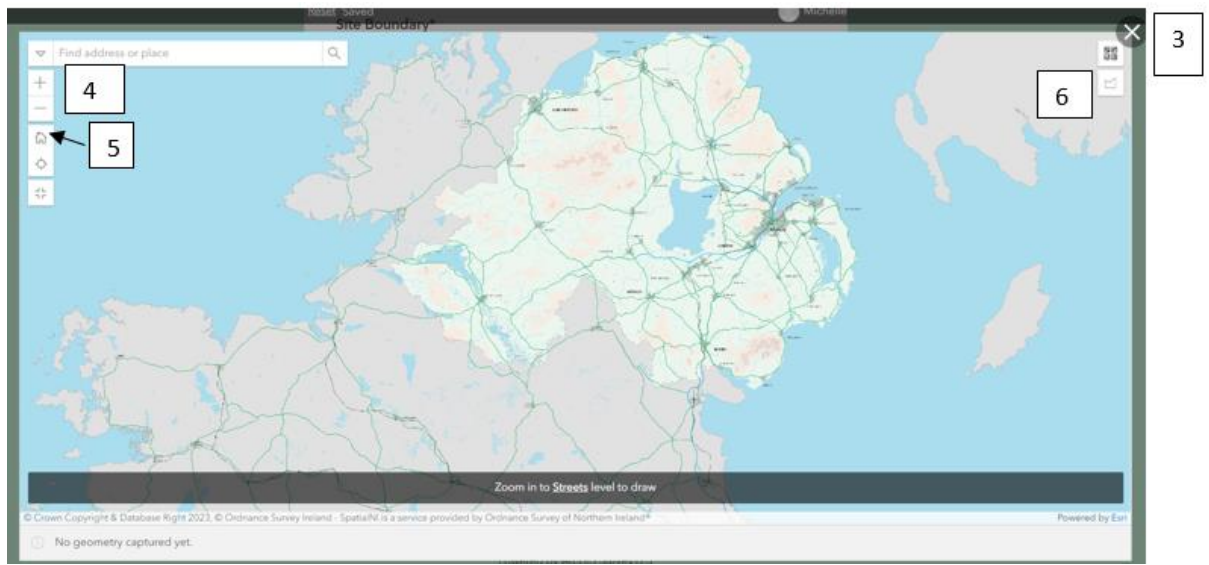
### **Map 1**

#### **Making the map larger** (see Map 1 above)

The size of the map on your screen may be quite small making it difficult to sketch the site with any great degree of accuracy. To make the map larger click on the 'Large map' icon labelled 1. To close the large map at any stage click on the 'X' in the top right corner of the map labelled 3 on map 2 below.

#### **Finding the site on the map** (see Map 1 above)

If you know the address of the site start typing the address into the 'Find address or place' bar labelled 2 and select the address from the options that appear. This will zoom to the selected address on the map. If no appropriate address appears in the dropdown list you will need to pan and/or zoom to the site (see below).



## Map 2

### To pan/move around the map (See Map 2 above)

To pan around the map click and drag on your mouse or touchpad.

If you need to zoom in or zoom out on the map you can use the '+' and '-' icons labelled 4.

On the large map you can zoom in and out by rolling forwards or backwards on your mouse wheel.

Alternatively you can double click to zoom in or hold 'Ctrl' whilst double clicking to zoom out. There are similar zooming options on the smaller initial map.

To return to the initial map extent click on the 'Default map view' icon labelled 5.

Once you have located the site and it is at a suitable scale for sketching its boundary click on the 'Area' icon labelled 6 in the top right of the map.

### Sketching/plotting the site (see Map 3 below)

Move the cursor to a starting point somewhere on the site boundary labelled 7 and single left-click to start sketching the boundary of the site. Moving along the boundary of the site left-click each time you want to make a change in the alignment of the boundary.

The boundary of the site will appear as a black and white dashed line. When approaching the starting point double left-click to complete the boundary of the site. The boundary of the site will turn to a solid blue line.

At any stage when sketching the site boundary you can use the icons located at the bottom centre of the map to Undo, Redo, Reset, Cancel or Finish labelled 8 the site boundary.



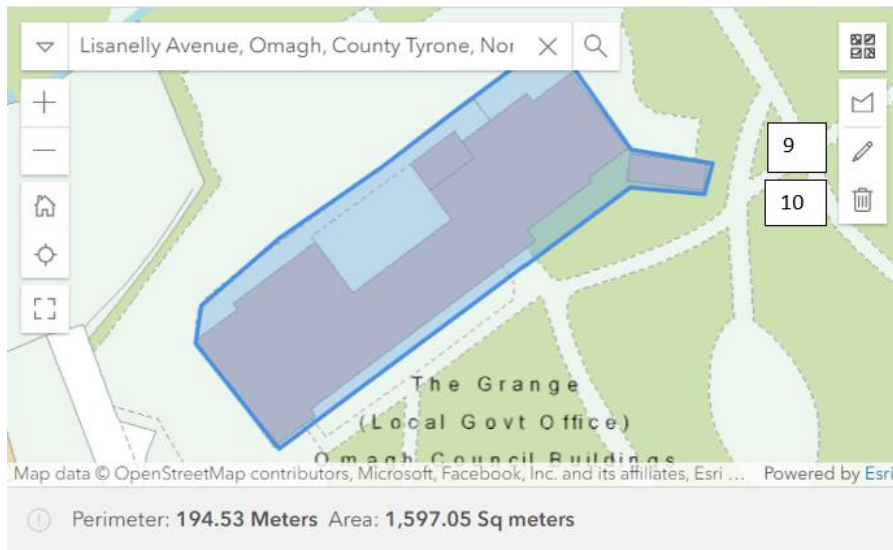
### Map 3

#### **Make adjustments to the completed boundary** (see Map 4 below)

If you want to make adjustments to the completed boundary of the site you can use the 'Edit' icon labelled 9 to move and/or add points along the boundary of the site.

#### **Deleting completed boundary if not satisfied** (see Map 4 below)

If not satisfied with the completed boundary of the site you can use the 'Delete' icon labelled 10 to remove the completed boundary and start the sketching process again.



## Map 4

### Final sketched boundary

When satisfied with the final sketched boundary, close out of the large version of the map if using this (click on the 'X' in the top right corner of the map labelled 3 on Map 2 above) and click 'Next' on the bottom of the survey page to progress to the next section.