



Fermanagh & Omagh
District Council
Comhairle Ceantair
Fhear Manach agus na hÓmaí



Public Health
Agency

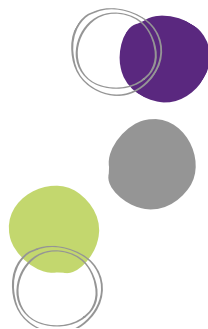
Project supported by the PHA

The Ardhowen Visual Guide



Tel: 028 66 325440

Email: ardhowen@fermanaghomagh.com



Car Park

The venue has approximately 120 car parking spaces available.

There are two designated spaces for people who hold a Blue Badge.

Visitors are advised not to use these spaces unless entitled to do so, with their Blue Badge displayed prominently.

A drop off point is available at the front door. If you wish to use the drop off point please contact Box Office in advance.

Getting to the Entrance

There are two paths from the car park area:

- A path from the upper and middle car parks to the front door. This path is flat and level.
- A path from the lower car park. This path has steps, with bright nosing and a handrail at one side.



See

- Grey path
- Red paving
- Silver railings
- Cars
- Grass
- Flowers
- Trees
- Birds
- Lough

Hear

- Talking
- Birds
- Traffic
- Boats

Smell

- Grass
- Flowers



Entrance

To enter The Ardhowen you must go through two glass doors into the main foyer area.

The main door has an automatic door pad and the inner door opens by an automatic sensor.



Box Office

The Box Office Counter is to the right of the Main Foyer.

The Counter is at a lowered level and has a built-in hearing loop system.

The 'PASS' Scheme provides a complimentary ticket to a person for their companion, where that person would not be able to attend or use the services at The Ardhowen without that companion. You can collect a registration form for this scheme from The Ardhowen Box Office or download it from the venue's website.

See

- Glass door
- Push door button
- Silver railings
- Windows
- Blue Carpet
- Green walls
- Wooden desk
- Posters
- Staff & visitors

Hear

- Talking
- Bell ringing to tell you that the show is about to start

Smell

- Aftershave / Perfume
- Food from cafe

There may be a queue at Box Office



Auditorium

The Auditorium can be entered through a walkway with a gradual inclined ramp on the ground floor or the stairs to the first floor.

The walkway and stairs have handrails on both sides.

There are three accessible seats in Row C. If you require one of these spaces please let Box Office know when booking your ticket.

A companion with a person with a disability may be able to sit beside each other if seats are available. If the three accessible spaces are used, a companion will be seated directly behind the individual.



Please turn off your mobile phone before entering the Auditorium.

See

- Stage
- Mircophones
- Stage set
- Actors
- Volunteers
- Speakers
- Lights
- Green walls
- Blue carpet
- Green seats

Before the performance starts, the lights will be on.

When the performance starts the lights will go out and you will only be able to see the stage.

Between the scenes the stage lights may go out and you will only see the emergency exit lights.

During the break and the end of the show the lights will come back on.



Hear

- Talking
- Acting
- Music
- Singing



There may be loud noises during the performances.



Hearing Loop



A 'T' feature hearing aid inductive loop system is available in the Ardhowen. This allows customers to have the performance projected directly through their hearing aid.

The Loop System works best in Rows C, D, E and F.

Cafe

The Cafe and Bar are on the same level as Box Office.

The furniture can be easily moved to suit the customer's needs.



At the end of the interval, a bell will ring to tell you it's time to go back to your seat.

Stairs to Upper Foyer

There is no lift available to the first floor.

The stairs to the Upper Foyer are to the right and left of the Cafe area.

The stairs have open risers and handrails on both sides.

From this area you can enter the back of the Auditorium and the Green Room.



See

- People
- Staff
- Glass windows
- Stairs
- Bar
- Stools
- Chairs
- Food
- Drink

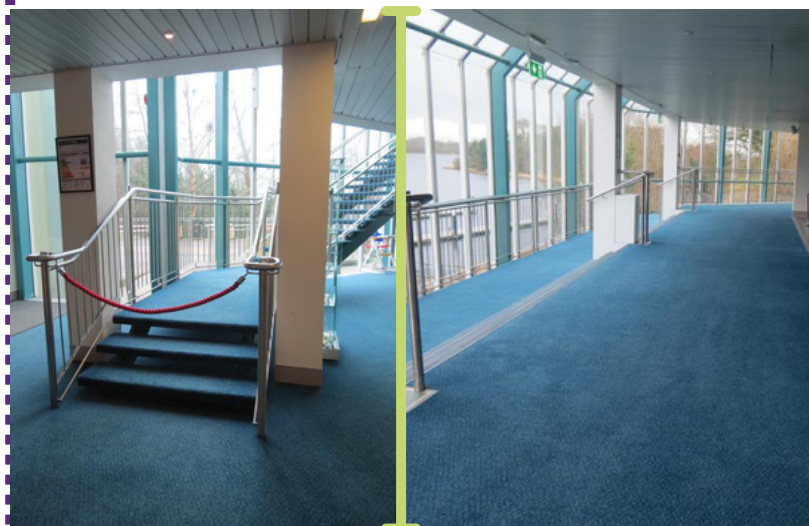
Hear

- Glasses
- Cooking
- Interval Bell
- Talking
- Eating
- Plates

Smell

- Food and drink from the cafe

There may be a queue at the Cafe



Studio

The Studio area can be hired for meetings and activities.

It can be entered by steps through the old building or a person with access requirements can enter the Studio through the fire exit doors directly from the car park.



- See**
- White walls
 - Windows
 - Wooden floor

- Hear**
- Shoes tapping on the floor
 - Music

Toilets

The toilets are located just to the left of the Box Office area.

An Accessible Toilet is available a short distance along the walkway between the Auditorium and Cafe.

There is an emergency alarm button beside the Toilet



- See**
- Sink
 - Toilet
 - Cubicles
 - Hand dryer

- Hear**
- Flushing
 - Hand dryer blowing
 - Water running

- Smell**
- Cleaning Products

Hand-dryer

