



Fermanagh & Omagh  
District Council  
Comhairle Ceantair  
Fhear Manach agus na hÓmaí



Public Health  
Agency

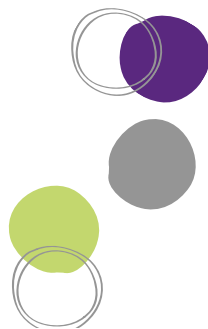
Project supported by the PHA

# The Connect Centre Omagh Visual Guide



Tel: 0300 303 1777

Email: [info@fermanaghomagh.com](mailto:info@fermanaghomagh.com)



## Car Park

There are several Blue Badge on-street car parking spaces available a short distance from the main entrance.

Visitors are advised not to use these spaces unless entitled to do so, with their Blue Badge displayed.

### See

- Grey road
- Grey paving
- Metal & Wooden railings
- Glass Door
- Cars
- Flowers
- Trees
- Birds
- People

### Hear

- Talking
- Birds
- Traffic

## Getting to the Entrance

You can get to the main entrance door by using:

- The accessible ramped front entrance path with a slight incline.

There are dropped kerbs along the footpaths on the main street.

The two entrance doors are automatic and will open when you approach.



## Reception

The reception counter is located in front of the main entrance.

The counter is at a lowered level and a hearing loop system is available.

A member of staff will be at reception to help you with your query.



### See

- Wooden doors
- White walls
- Windows
- Tiled and carpeted floors
- Stairs
- Front desk
- Posters
- Staff & visitors

### Hear

- Talking
- Telephones ringing

### Smell

- Aftershave / Perfume



## Meeting Rooms

The meeting rooms are on the ground floor just off the main foyer area.

The rooms have level access, white walls and carpeted or tiled floors.



# Toilets

Toilets are available on the ground and first floors.

An Accessible Toilet is available on the ground floor to the left hand side of the reception desk.



- See**
  - Sink
  - Handrails
  - Toilet
  - Hand dryer
- Hear**
  - Flushing
  - Water running
  - Hand dryer blowing
- Smell**
  - Cleaning Products