



Fermanagh & Omagh
District Council
Comhairle Ceantair
Fhear Manach agus na hÓmaí



Public Health
Agency

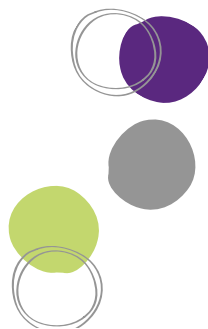
Project supported by the PHA

Enniskillen Castle Visual Guide



Tel: 028 66 325000

Email: castle@fermanaghomagh.com



Car Park

Car Parking is available in the car park opposite the Castle entrance.

There are 5 designated spaces for people who hold a Blue Badge in the car park.

A drop off point is available to the left of the front entrance door.

Getting to the Entrance

There are three entrances from the car park area:

- A footpath from the Car Park.
- A footpath from the Wellington Road Area.
- A pathway from the Broadmeadow Area.

There are dropped kerbs along the footpaths from the Car Park and Wellington Road areas.

A raised crossing point is available from the Broadmeadow to the footpath along the main entrance.



See

- Grey path
- Grey paving
- Silver railings
- Cars
- Grass
- Flowers
- Trees
- Birds
- Lough

Hear

- Talking
- Birds
- Traffic
- Boats

Smell

- Grass
- Flowers



Entrance

To enter the Castle you must first go through two sets of glass doors into the foyer area.

The doors are wide and automatic.

Reception

The Reception counter is to the right of the Main Foyer. There is a lowered section closest to the stairs.

A hearing loop system is available at reception. A portable system is also available for the other rooms.

To begin your visit to Enniskillen Castle please speak to a member of staff who will help you buy your ticket.

The PASS Scheme provides a complimentary ticket to a person for their companion, where that person would not be able to attend or use the services at the Castle without that companion.

You can collect a registration form for this scheme from Reception or by downloading it from the website.



See

- Glass door
- Silver railings
- Windows
- Displays
- Grey floor
- White walls
- Posters
- Wooden desk
- Staff & visitors

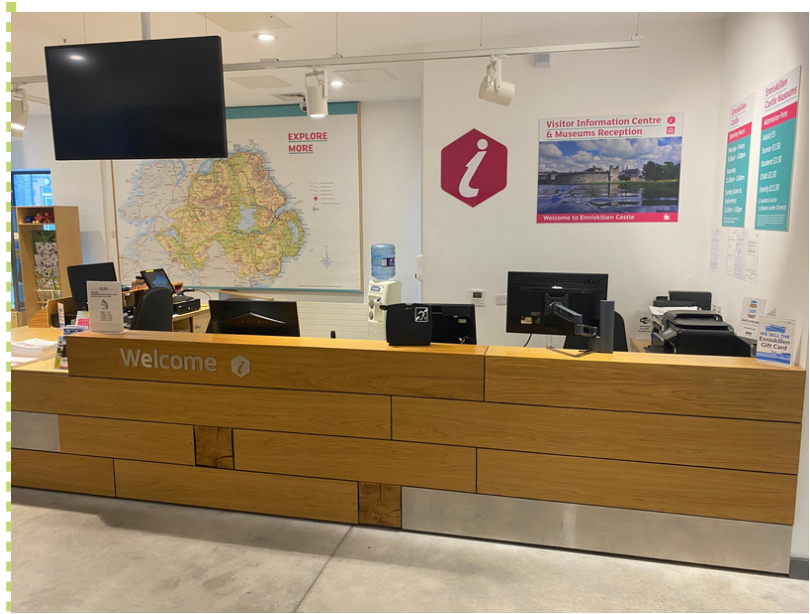
Hear

- Talking
- Telephones

Smell

- Aftershave / Perfume
- Food from cafe

There may be a queue at Box Office



Visitor Centre

After you buy your ticket, you can start your tour by going to the first floor.

A lift is available opposite Reception.

The stairs to the 1st floor area are in the middle of the main entrance building. The stairs have handrails on both sides and see-through panels between the stairs.

Here you will be able to look out of the 'Picture Window' and use the interactive touchscreens. You can also browse the Digital Film Archive and Marble Arch Caves Information Wall.

Fermanagh Genealogy Centre is available on this floor with in person advice accessible by prior appointment.

From the back of the first-floor area you can go out onto the Castle Walkway.



See

- Signs
- Display cabinets
- Pictures
- Large window
- Visitors

Hear

- Talking
- Videos
- Music

Smell

- Food and drink from the cafe



Exhibition Areas

To access the exhibitions you must exit the building via the door at the coffee shop.

The door has an automatic push pad on the left-hand side.

To get to the exhibition areas you must follow the flat surface to the double white doors, the doors will open automatically when you approach them.

This brings you into the Lakelands 1 Gallery.

Lakelands 1 Gallery

The Gallery has interactive displays and lowered display drawers.

From the Lakelands 1 Gallery you can either take the stairs or the lift to the 1st floor Lakelands 2 Gallery.

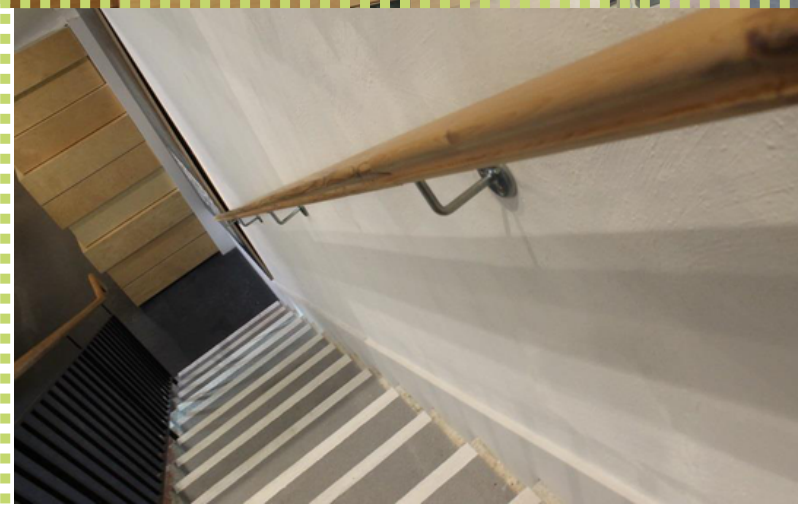


See

- Signs
- Display cabinets
- Large window
- Pictures
- Visitors
- Old objects

Hear

- Talking
- Videos
- Music



Lakelands Gallery 2

To enter the Gallery you must go through the double doors opposite the lift. Please push the automatic push pad to the right-hand side of the door to enter.

This Gallery has a visual film screen projected onto the floor.

From the back of the Gallery you can enter the Full Circle Gallery using the push pad button to the right-hand side.

Full Circle Gallery

The Full Circle Gallery has audio seats which can play songs, music and talks relating to the displays.

After the Full Circle Gallery, the tour continues on the ground floor. To get here you can either go down the stairs at the back of the Gallery or return to the lift.

Once on the ground floor you can use the doors at the back of the Lakelands 1 Gallery to enter the Island Towns Gallery.



See

- Signs
- Display cabinets
- Large window
- Pictures
- Visitors
- Old objects

Hear

- Talking
- Videos
- Music



Island Towns Gallery

The Island Towns Gallery has displays of old shop items and exhibits from Enniskillen Town.

To exit the Gallery you must return through the Lakelands 1 Gallery and take the doors to your right. To exit you must press the push pad on the left-hand side.

Once you leave the Gallery you can use the ramped area along the side of the Visitor Centre to continue the Tour of the Castle Courtyard.

Castle Courtyard

The Castle Courtyard has sloped areas and some of the surfaces are made up of rough cobbles.

To the right of the Courtyard there is an Information Desk and Shop called the Quartermaster's Store.

After the Castle Courtyard you can go into the Castle Keep.



See

- Signs
- Display cabinets
- Large window
- Pictures
- Visitors
- Old objects

Hear

- Talking
- Videos
- Music



See

- Grey path
- Grey cobbles
- Signs
- Visitors
- Picnic tables
- White umbrellas
- Visitors
- Old objects

Hear

- Talking
- Music

Castle Keep

There is a ramped approach to the main door with handrails at both sides.

The door is manually operated but offers a wide entrance.

Inside the Keep there is level access.

There are stairs to the two upper levels, with no lift available.

Watergate

When leaving the Castle Keep you can either take the cobbles to the left or the flat surface to the right and go around the Keep to the Watergate.

Barrack Store

The Barrack Store is a large open room, which is available to hire.

This room has level access and double entrance doors.



See

- Grey path
- Grey paving
- Railings
- Cars
- Grass
- Flowers
- Trees
- Birds
- Lough

Hear

- Talking
- Birds
- Traffic
- Boats

Smell

- Grass
- Flowers



Castle Garden

The Castle Garden is located beside the Barrack Store.

This area has a level path and a grassed area.

Heritage Centre

To enter the centre you must go through two sets of automatic doors. Please use the push pads on the right-hand side.

Within the centre there are several exhibition spaces.

The Living Memory Gallery and Cosy Corner are on the ground floor and the Fermanagh Hearth and Temporary Exhibition Gallery are on the 1st floor.

There is a lift to the 1st floor, as well as stairs.



See

- Signs
- Display cabinets
- Large window
- Pictures
- Visitors
- Old objects

Hear

- Talking
- Videos
- Music

Smell

- Grass
- Flowers

Ending the Tour

When finishing your tour please use the automatic door at the rear of the Visitor Centre to enter the Reception Area.



Toilets

There is an Accessible Toilet located between the Reception Area and Cafe.

There is an emergency alarm button beside the Toilet



Hand-dryer



See

- Sink
- Toilet
- Cubicles
- Hand dryer

Hear

- Flushing
- Hand dryer blowing
- Water running

Smell

- Cleaning products

Changing Facility with Changing Places Equipment

There is a changing facility with a changing bench, ceiling hoist, shower and adjustable hand basin located in the Heritage Centre.

The facility has a radar key lock. You can use your own radar key to access the facility or borrow one from Reception.



Cafe

The Café is on the ground floor of the Visitor Centre.

The furniture can be rearranged to suit the customer's needs.

Automatic doors at the back of the Café allow customers to take their food and drink outside.

There are accessible picnic spaces available in the outdoor Courtyard.



See

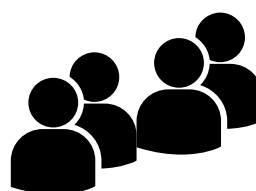
- People
- Staff
- Glass windows
- Stairs
- Bars
- Tables
- Stools
- Chairs
- Food
- Drink

Hear

- Talking
- Eating
- Plates
- Glasses
- Cooking

Smell

- Food and drink from the cafe



There may be a queue at the Cafe